



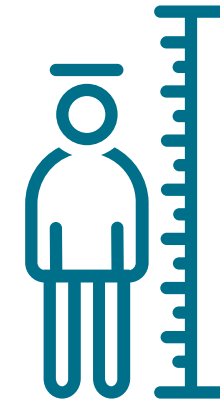
THE TALENT IDENTIFICATION MODEL

WHAT DO FOOTBALL SCOUTS LOOK FOR?

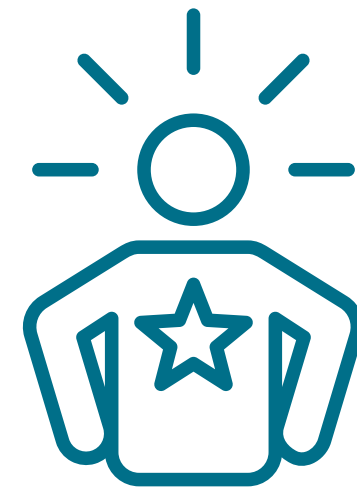


THE TALENT IDENTIFICATION MODEL

1) ANTHROPOMETRIC PREDICTORS



2) PHYSIOLOGICAL PREDICTORS



3) PSYCHOLOGICAL PREDICTORS



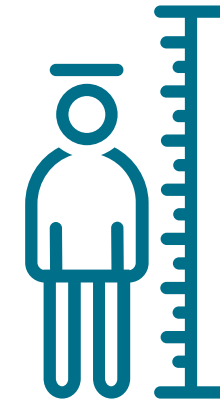
4) SOCIOLOGICAL PREDICTORS

5) TECHINICAL SKILLS TALENT



THE TALENT IDENTIFICATION MODEL

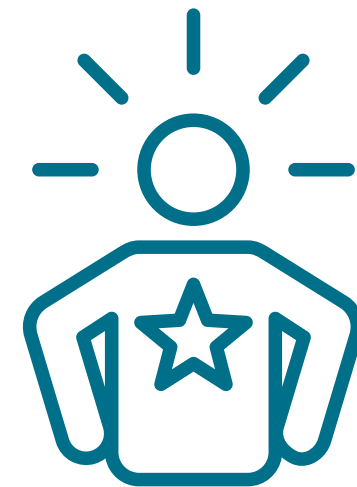
1) ANTHROPOMETRIC PREDICTORS



2) PHYSIOLOGICAL PREDICTORS



3) PSYCHOLOGICAL PREDICTORS



4) SOCIOLOGICAL PREDICTORS



5) TECHNICAL SKILLS TALENT



1) ANTHROPOMETRIC PREDICTORS

THE PHYSICAL MEASUREMENTS

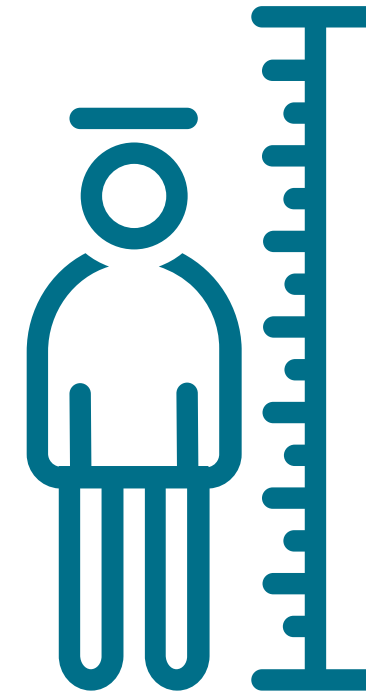
*CERTAIN POSITIONS REQUIRE CERTAIN ANTHROPOMETRICS (E.G., CENTREBACKS USUALLY NEED TO BE TALL).

*OTHER FACTORS INCLUDE:

*GROWTH

*WEIGHT

*BODY TYPE



2) PHYSIOLOGICAL PREDICTORS

EVALUATES THE PHYSICAL ABILITY TO
PERFORM WORK. SOME OF THE AREAS
SCOUTS WILL LOOK FOR MAY BE:

* MUSCULAR STRENGTH

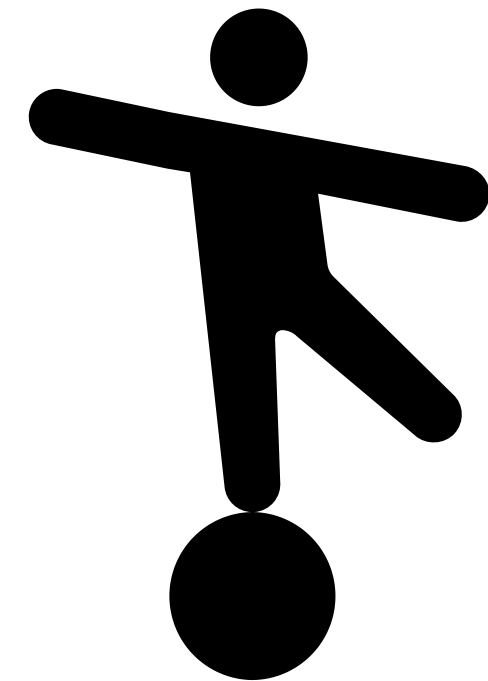
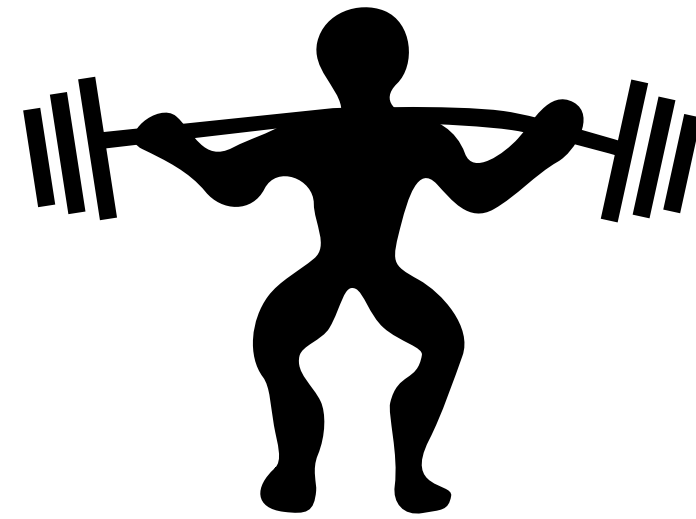
* SPEED & AGILITY

* BALANCE

* POWER

* STAMINA

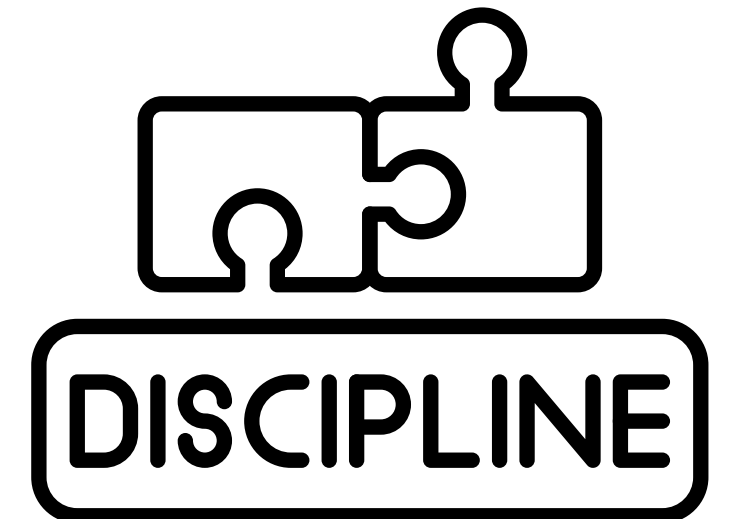
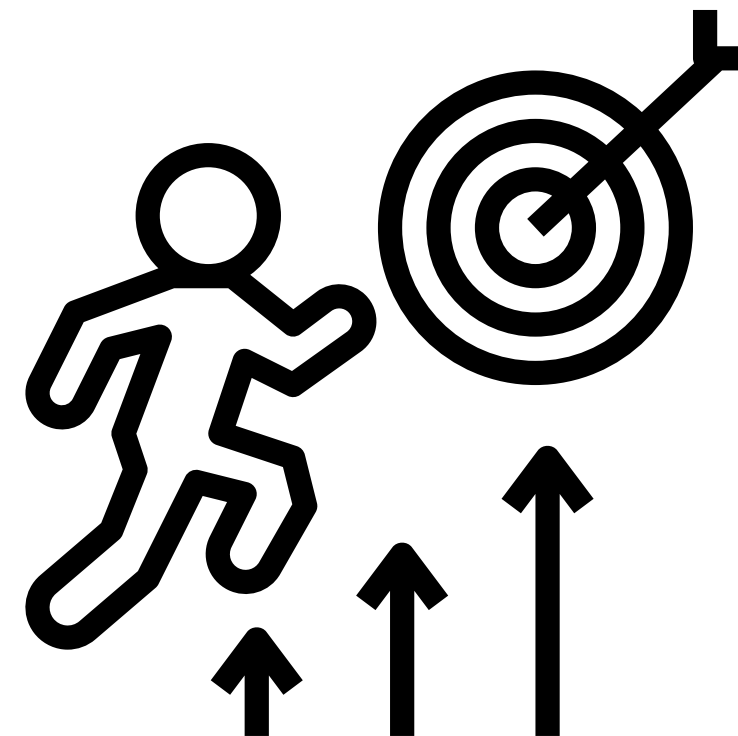
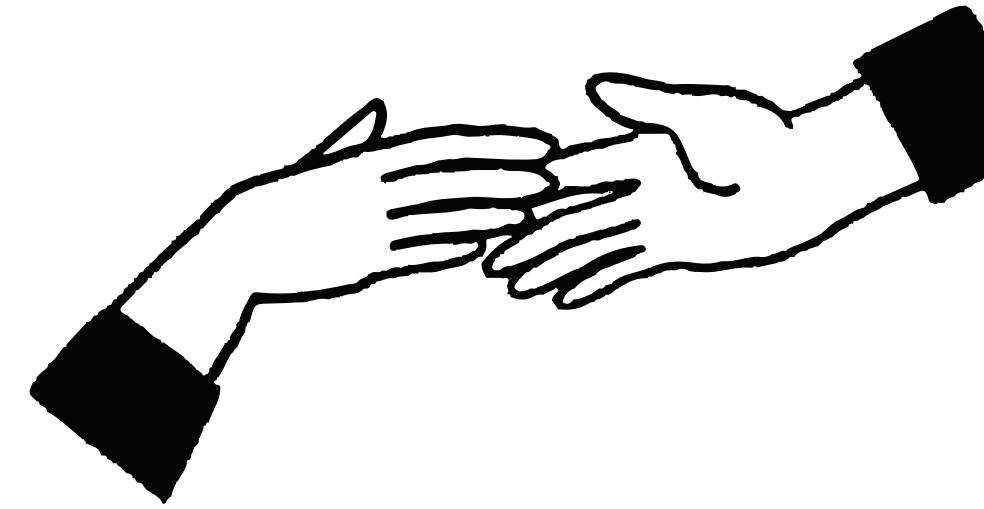
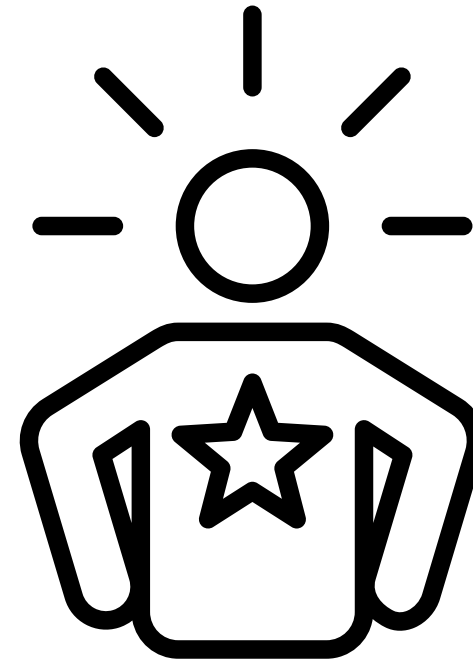
* ENDURANCE



3) PSYCHOLOGICAL PREDICTORS

ONE OF THE MOST DIFFICULT FACTORS
TO COACH & DEVELOP WITHIN A
PLAYER IS THEIR MENTAL STRENGTH.
PREDICTORS INCLUDE:

- *CONFIDENCE
- *DETERMINATION
- *MOTIVATION
- *ATTENTION
- *AWARENESS
- *AMBITION
- *RESPECT
- *DISCIPLINE



4) SOCIOLOGICAL PREDICTORS

THE OUTSIDE INFLUENCES ARE KEY FOR A SCOUT TO FULLY UNDERSTAND THE PLAYER. SOME FACTORS INCLUDE:

* EDUCATION

* PARENTAL SUPPORT

* SOCIO-ECONOMIC INFLUENCES

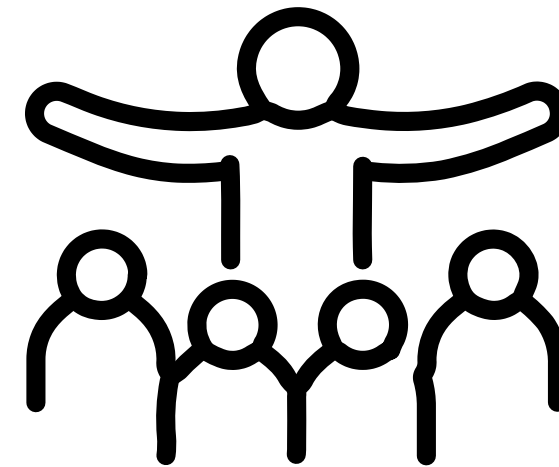
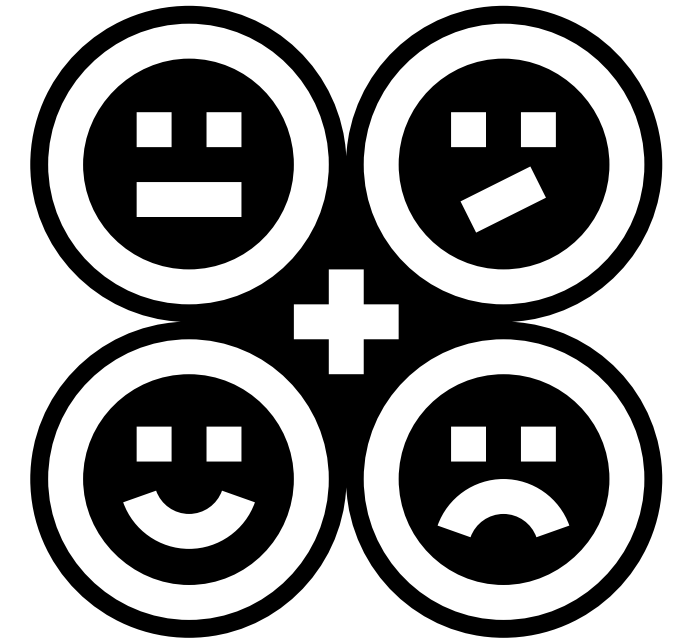
SCOUTS MAY ALSO APPROACH YOUR SCHOOL FOR A REPORT TO

* LEVEL OF RESPECT TO OTHERS

* INTERACTION WITH PEERS

* BEHAVIOUR

* HOW YOU LEARN



5) TECHNICAL SKILLS PREDICTORS

THE INDIVIDUAL SKILLS OF A PLAYER.
THESE MAY BE DEVELOPED BY
STRUCTURED TRAINING & PRACTICE.

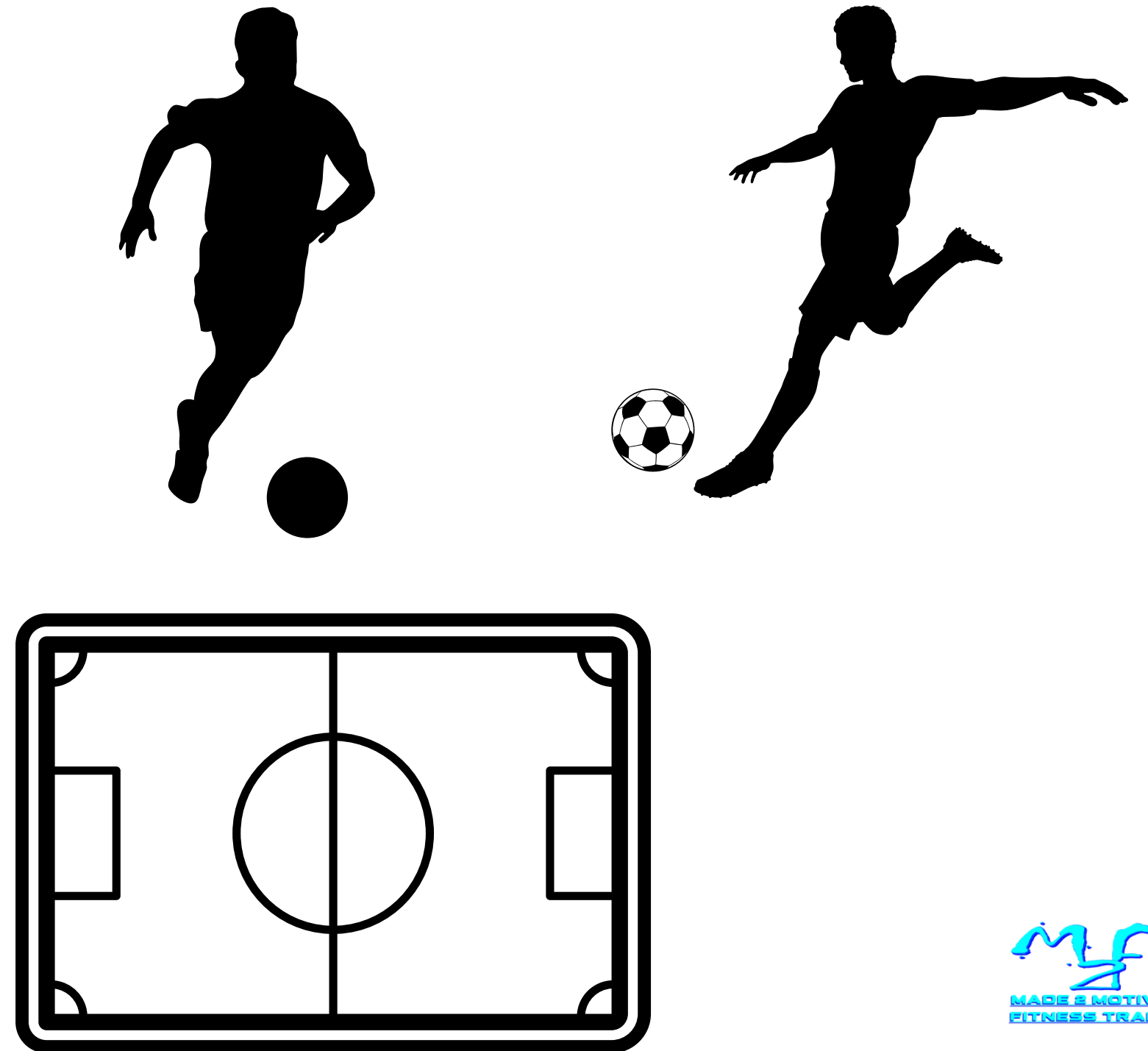
* BALL CONTROL

* AWARENESS

* DRIBBLING

* SHOOTING

* POSITIONING



STAY TUNED FOR MORE FOOTBALL
ARTICLES/PRESENTATIONS

SOURCES:
PLAYERSCOUT.CO.UK